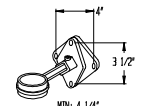
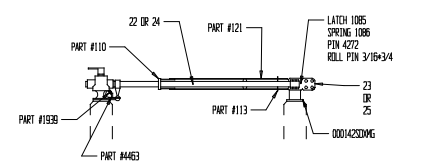
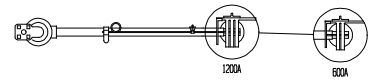
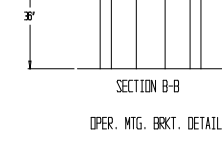
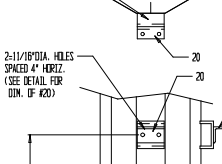
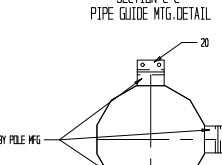
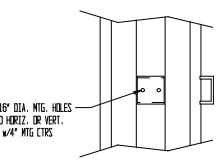
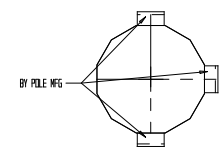
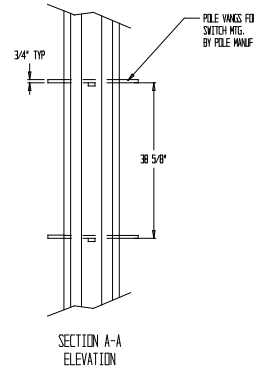
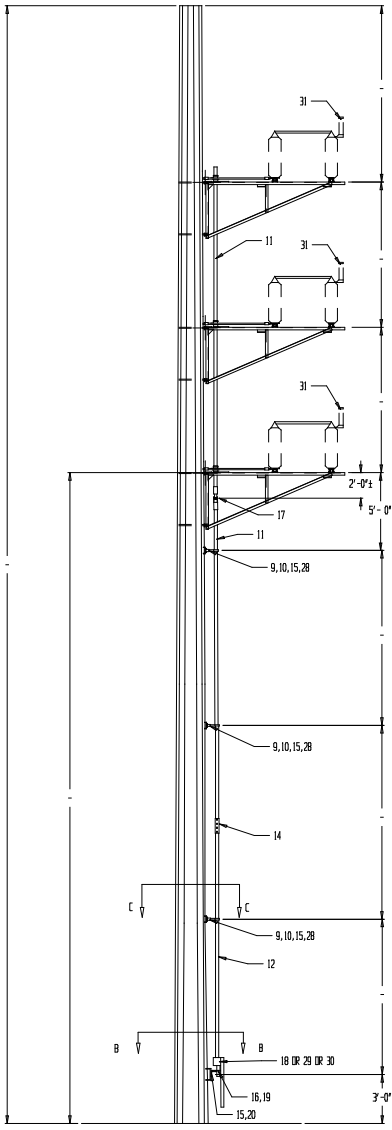
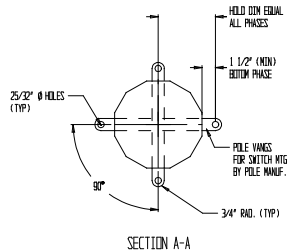


18, 19, 23, 30 OPERATOR HANDLE DETAIL



QTY	PART	MATERIAL	ITEM	DESCRIPTION
-	-	-	34	-
-	-	-	33	-
-	-	-	32	FGT ASSEMBLY (OPTIONAL)
-	-	-	31	TECO RIFTER (OPTIONAL)
1	-	-	30	OPERATOR HANDLE ASSY, 3-WAY
-	-	-	29	OPERATOR HANDLE ASSY, 2-WAY
*	*	*	GALV	MACHINE BOLTS 1/2"-13 X 7/8" LW (VARIES w/ POLE HEIGHT)
-	-	-	27	MOTOR OPERATOR (OPTIONAL)
6	3	-	26	STABILIZER BRKT
9	6	3	25	JAW ASSY 69/161KV 12A RH
9	6	3	24	BLADE LESS JAW 69KV 12A RH
-	-	-	23	JAW ASSY 69/161KV 6A RH
-	-	-	22	BLADE LESS JAW 69KV 6A RH
18	12	6	21	69KV INSULATOR
3	2	1	20	OPERATOR MTG BRKT
3	2	1	19	OPERATOR LOCKING PLATE ASSY
-	-	-	18	OPERATOR HANDLE ASSY, 1-WAY
3	2	1	17	U-JOINT ASSY PIPE-TO-PIPE
24	16	8	16	CARRIAGE BOLT 5/8"-11 X 1 1/2" N,L,W
*	*	*	15	MACHINE BOLT 5/8"-11 X 1 3/4" N,L,W
*	*	*	14	2" IPS PIPE COUPLING
12	6	-	13	MACHINE BOLT 1/2"-13 X 1 1/2" N,L,W
*	*	*	12	2" IPS SCH 40 PIPE w/ (VARIES w/ POLE HEIGHT)
*	*	*	11	2" IPS SCH 40 PIPE w/ (VARIES w/ POLE HEIGHT)
*	*	*	10	PIPE GUIDE MTG BRKT (VARIES w/ POLE HEIGHT)
*	*	*	9	PIPE GUIDE ASSY (VARIES w/ POLE HEIGHT)
9	6	3	8	3/4" IPS SCH 40 PIPE w/ 3"-4"
18	12	6	7	3/4" IPS CLEVIS ASSY
9	6	3	6	PIPE LEVER ASSY
6	4	2	5	PHASE GUIDE (MIDDLE & BOTTOM)
3	2	1	4	THRUST BEARING ASSY
9	6	3	3	PIVOT ASSY 1 LEVER (4EB)
9	6	3	2	INSULATOR PEDESTAL
9	6	3	1	AD-69-6/12 FRAME ASSY

REV	DATE	BY	MARK	APP
1	7-8-04	MJB	A	
2	9-29-02	WRP		

DRAWING # **SK020810**
 SHEET 1 OF 1

TURNER ELECTRIC CORPORATION
 FAIRVIEW HEIGHTS, IL., USA