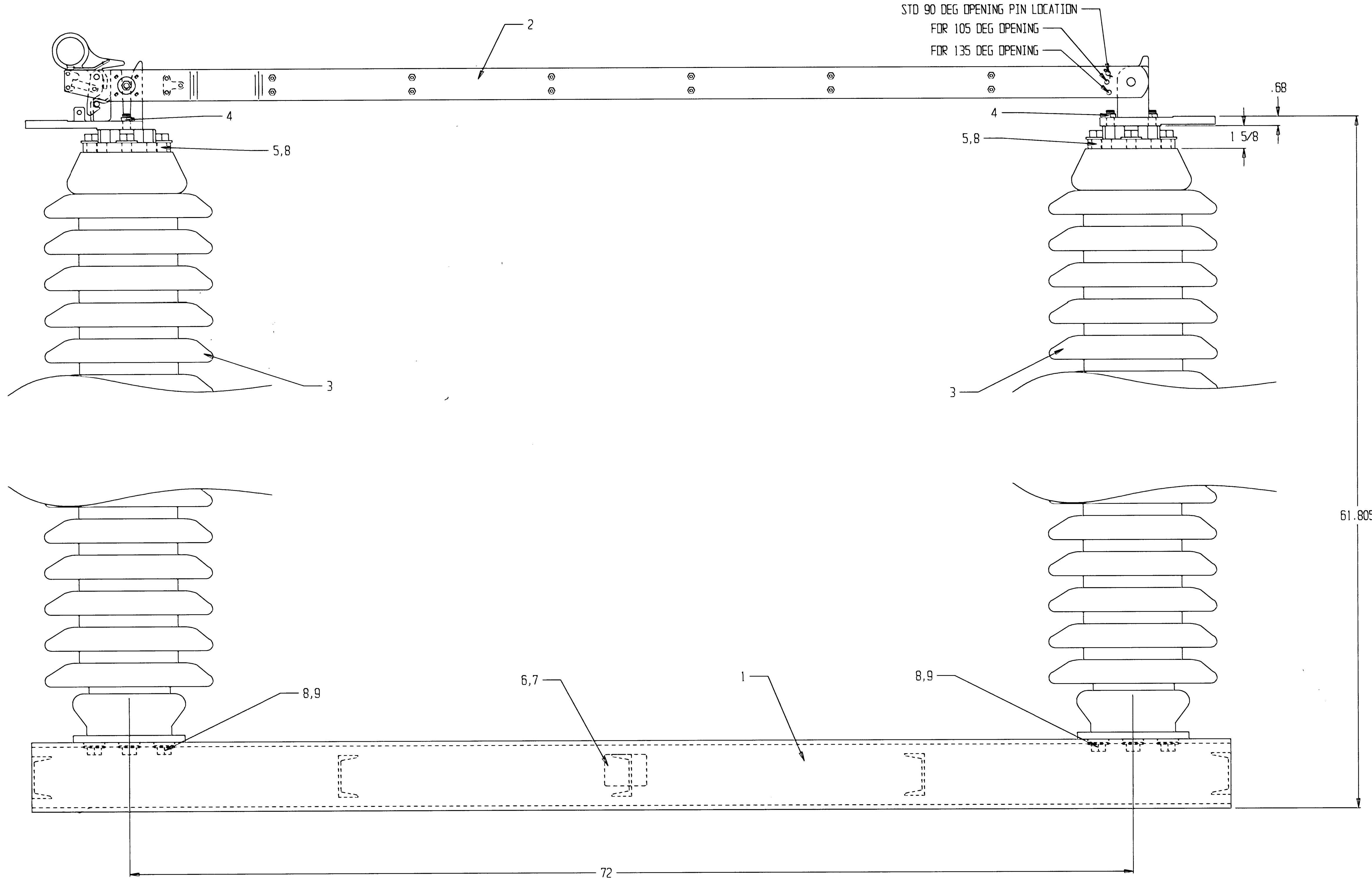
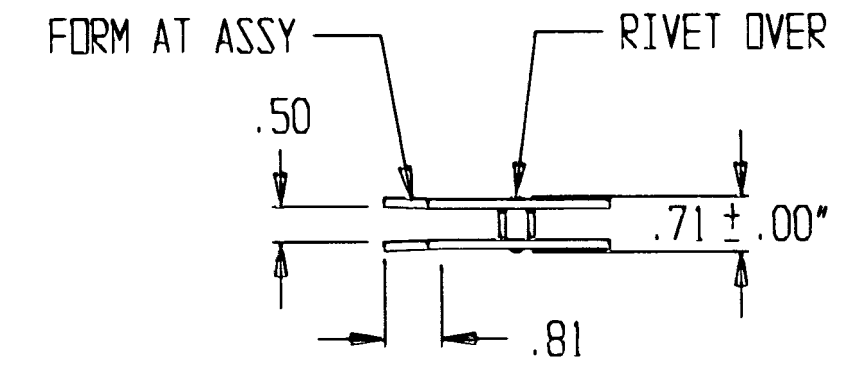


NOTES: 1. THE INSULATORS ARE SHOWN FOR HORIZONTAL AND VERTICAL MOUNTING  
 2. THE INSULATORS ARE INVERTED FOR UNDER-HUNG MOUNTING.

TIGHTEN NUT TO 40 IN-LBS ABOVE THE TORQUE REQUIRED TO RUN UP NUT



NOTES: 1. FOR CORRECT CONTACT PRESSURE ON CLIP, ADJUST BLADES SO THEY ARE  $.013 \pm .004$ " WIDER IN THE CLOSED POSITION THAN IN THE OPEN POSITION. THIS DIMENSION MUST BE MEASURED ON THE OUTSIDE OF THE BLADES, ABOVE CONTACT POINTS.  
 2. LUBRICATE CONTACT SURFACES PER SPEC.  
 3. STANDARD BASES ARE GALV STEEL.

QTY	PART	MATERIAL	ITEM	DESCRIPTION
-	-	-	10	-
8		GALV	9	FLAT WASHER 5/8"
16		GALV	8	MACHINE BOLT 5/8"-11 * 1 1/2" LW
4			7	DRIVE SCREW
1	MP251800X	ALUM	6	NAMEPLATE
2	011096SDXMG	BRASS	5	5" TO 3" B.C. ADAPTER
4		GALV	4	MACHINE BOLT 1/2-13 * 2 1/2" LW,N
2			3	INSULATOR TR288
1	A009663-138		2	CURRENT CARRYING PARTS ASSY
1	011676SXG	GALV	1	MOUNTING BASE 138 KV

REVISIONS				DATE	BY	CHK	138 KV	1200 AP
REV. BLADE DETAIL: ECM 3276			11-4-02	MLR	A			
REV. ITEMS 4,8,9			12-27-02	MLR	B			

CUSTOMER P.O.# \_\_\_\_\_ SERIAL NUMBER: \_\_\_\_\_

BT2-138-12/6017  
 HOOKSTICK SWITCH

TURNER ELECTRIC CORPORATION  
 FAIRVIEW HEIGHTS, IL., USA

DRAWING # SK980423  
 SHEET 1 OF 1

BY: TSD  
 DATE: 12-30-02